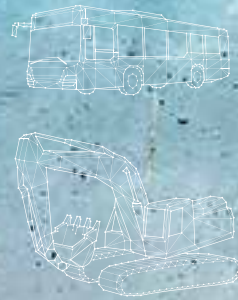


VECTOPOWER VP600 – model 3

from 58 up to 440 kVA



Software

set-up even easier

STO

integrated Safe Torque Off



Connectors

for faster connections

Power

improved power reserves

Power electronics for
commercial vehicles and
construction machines

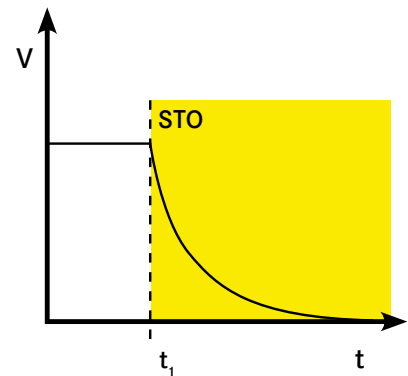
efficient. sturdy. long-lived.

Safe Torque Off (STO)

Safety simply implemented

No compromises can be made in safety-related applications. The controlled switching of the torque is one of them.

With our integrated solution of the STO according to DIN EN 61800-5-2, you save the previously external safety circuit during installation.



Connectors

for faster installation and secure connections

The Amphenol © Interlock connections also offer UVW phase coding and increased protection against contact. The device can be wired without opening.

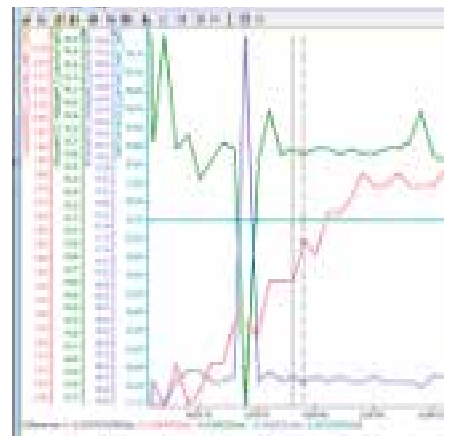


Software

faster time-to-market for your projects

We have expanded our software to make applications and commissioning even easier.

- Control of different motor topologies:
PM synchronous, PM reluctance, AC induction
- The new, improved VE-Config tool makes commissioning even easier.
- Save time when optimizing the drive by using our Analyzer.



Power

up to 25% more power reserves

The new generation of the VP600 traction family provides up to 25% more power for 10 minutes.



VP 600

for on- and off-highway



Available from Q3 - 2020

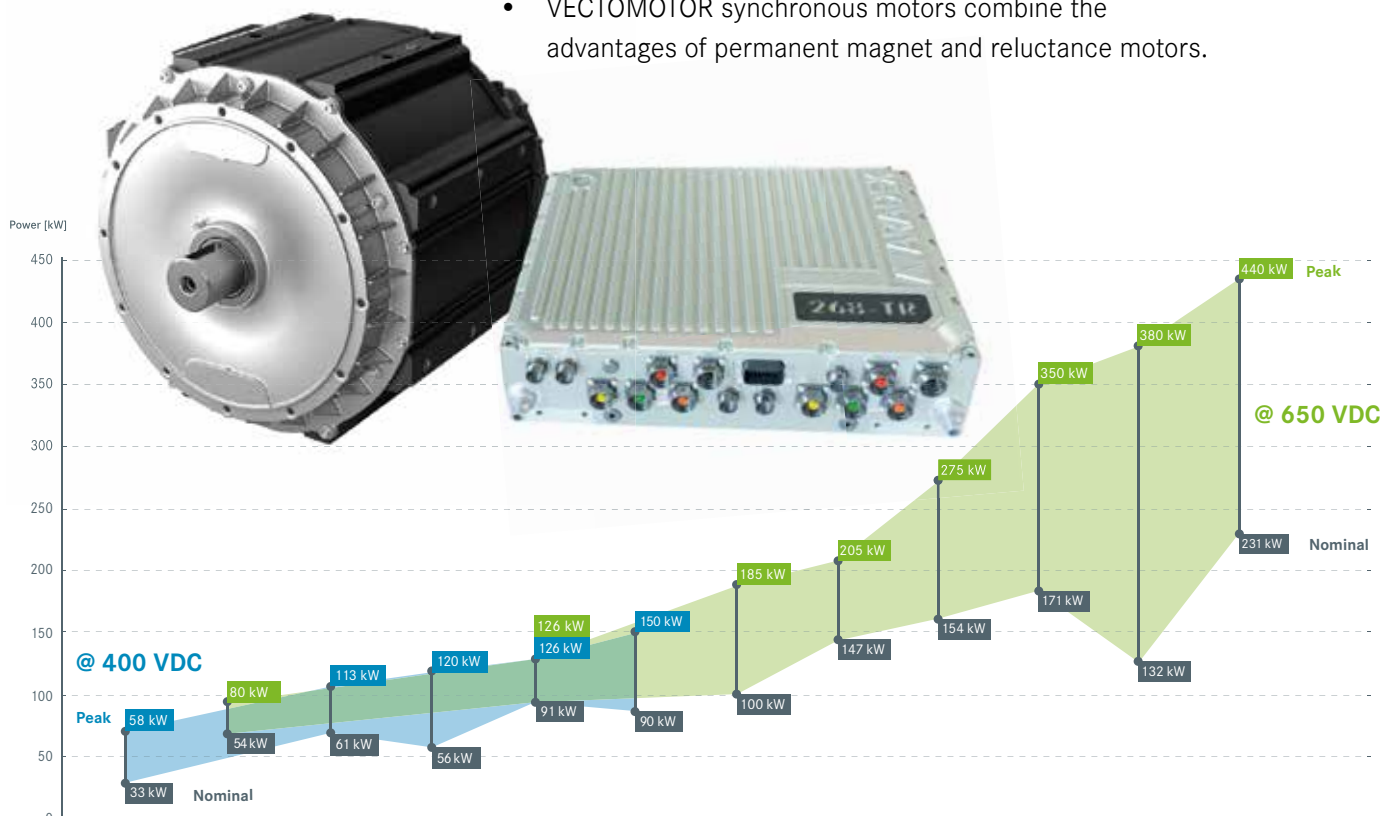
| | VP600-18W 330 -18W340 -18W360 | VP600-18W368 -28W344 |
|--------------------------|--|---|
| Voltage range | 30 - 800 VDC (safety switch off: 820 V) | 30 - 800 VDC (safety switch off: 820 V) |
| Nominal current | up to 95 A _{rms} 160 A _{rms} 275 A _{rms} | up to 440 A _{rms} 160 A _{rms} (each) |
| Peak current | up to 160 A _{rms} 450 A _{rms} 520 A _{rms} | up to 900 A _{rms} 450 A _{rms} (each) |
| Power | up to 87 kVA 146 kVA 252 kVA | up to 404 kVA 146 kVA (each) |
| Communication | CAN | CAN |
| Dimensions | H 130 mm L 398 mm W 263 mm | H 133 mm L 412 mm W 522 mm |
| Weight | approx. 18 kg | approx. 40 kg |
| Cooling | water / glycol | water / glycol |
| Max. colling water temp. | 65°C without Derating | 65°C without Derating |
| Protection class | IP65 | IP65 |
| Power units | 1 1 1 | 1 2 |

This product data is preliminary and is subject to change

An ideal fit for our VM600M electric motors

With the VECTOMOTOR product line, ARADEX offers electric motors which, together with the VECTOPOWER inverters, represent an optimally coordinated drive solution for electrification.

- extremely high efficiency
- available for different motor topologies
- VECTOMOTOR synchronous motors combine the advantages of permanent magnet and reluctance motors.



Annotation

We reserve the right to make changes to the content of this document at any time without notice. ARADEX AG assumes no responsibility for any errors or incompleteness in this document.

We reserve all rights to this document and the objects and illustrations contained therein. Reproduction, disclosure to third parties or use of its content - including parts - is prohibited without the prior written consent of ARADEX AG.

All rights and trademarks remain with the legal owner.

ARADEX AG
Ziegelwaldstr. 3
D-73547 Lorch
Tel.: +49 (0) 71 72 - 91 81 0



sales@aradex.com
www.aradex.com